



The Food and Environment
Research Agency



2009 FERA (CSL)/JIFSAN Joint Symposium

Methods and Systems for Tracking, Tracing and Verifying Foods

May 13-15, 2009





Since 1996

A Cooperative Venture of University of Maryland
and US Food & Drug Administration

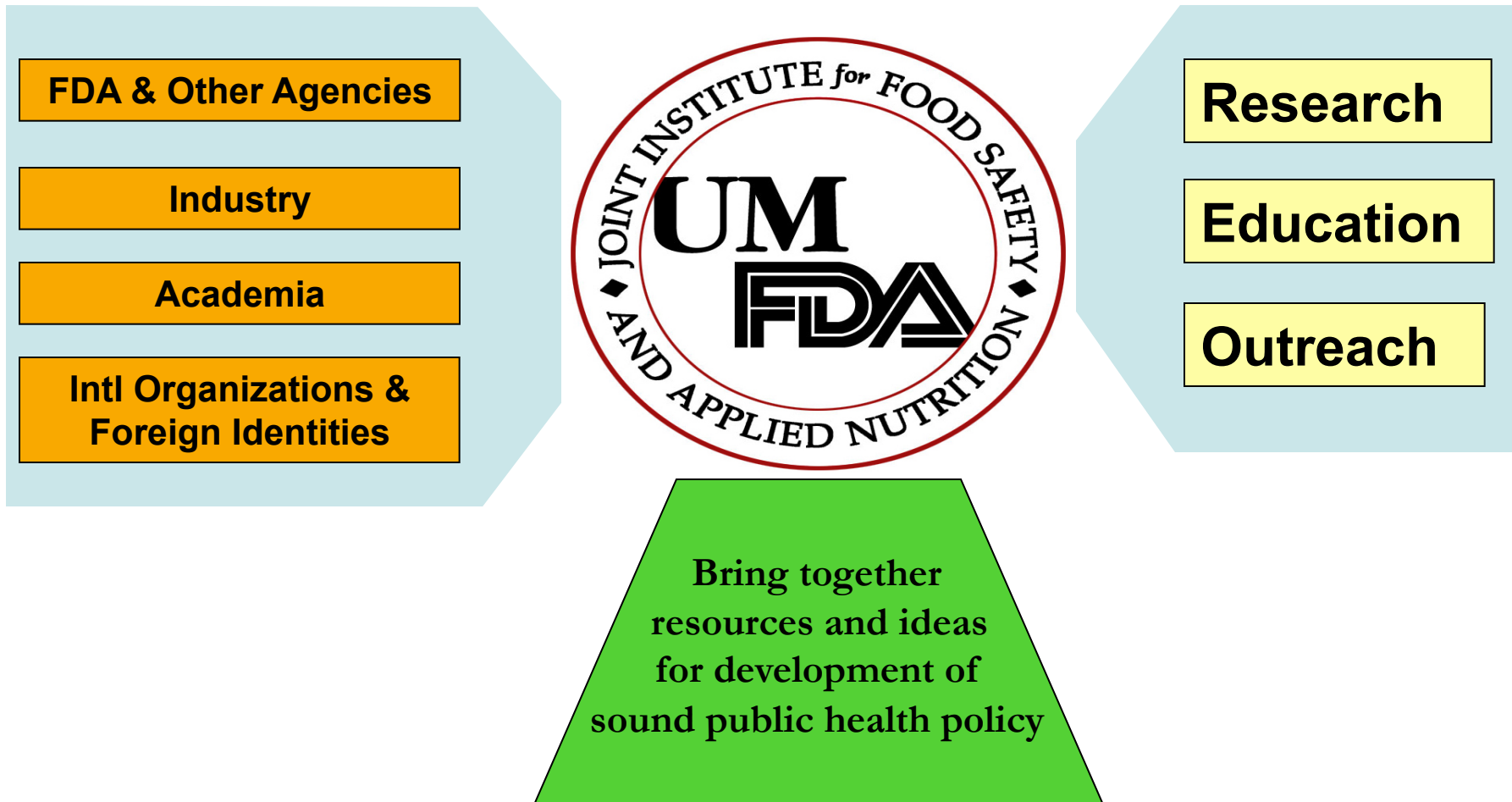


Mission

to advance sound strategies that improve public health, food safety, applied nutrition and animal health using risk analysis principles through cooperative research, education and outreach programs

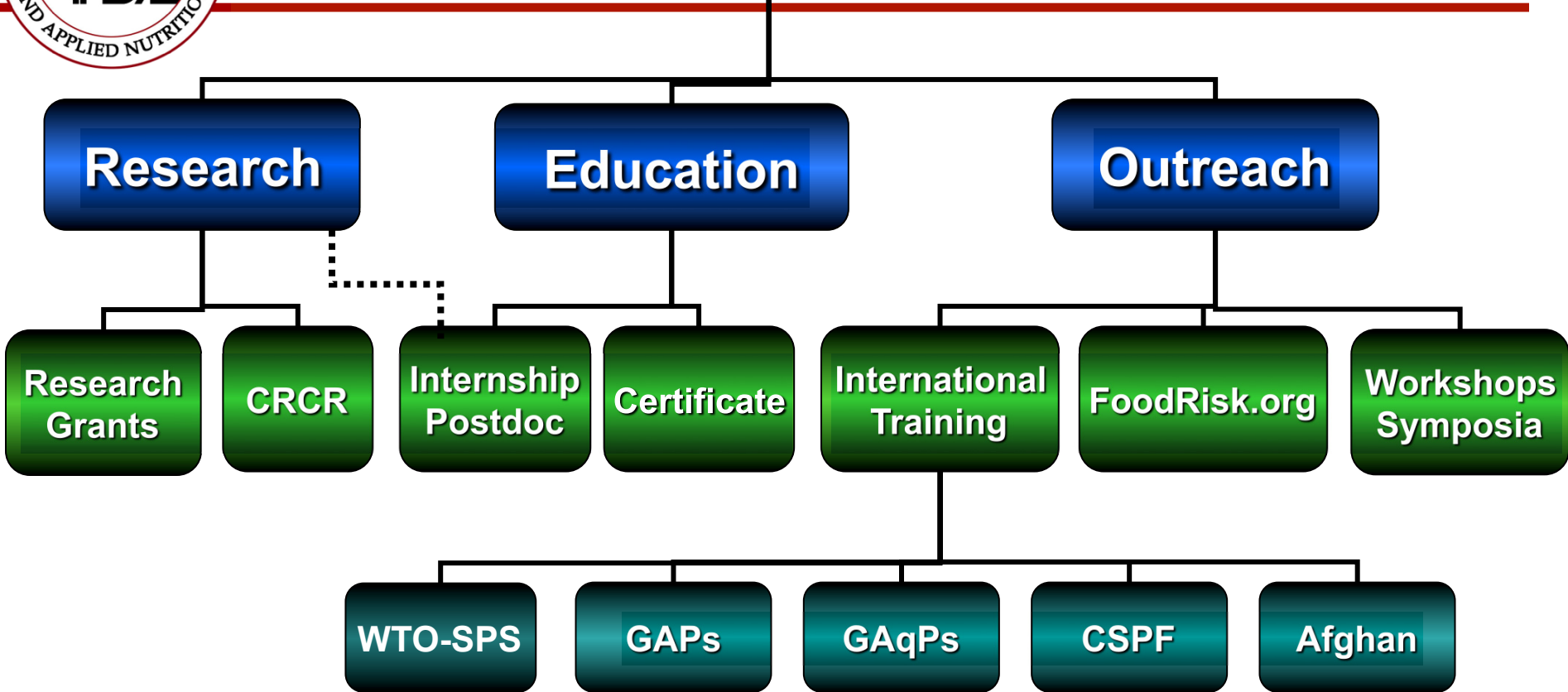


A Shared Vision





JIFSAN Programs



www.jifsan.umd.edu



Food Safety Risk Analysis Courses

- Core Courses
 - Overview of risk analysis
 - Risk management
 - Risk communication
 - Risk assessment
- Intermediate Courses
 - Quantitative risk assessment methods: probabilistic methods
 - Quantitative risk assessment methods: model building



Food Safety Risk Analysis Programs

- Summer Integrated Program
 - 15 days in Washington DC in June/July
- Customized In-Country Training
 - Thailand, Mexico, Nicaragua
- Distance Learning (Online) Courses
 - 300 professionals from 27 countries participated
- FoodRisk.org
 - Online resource specialized in food safety risk analysis
 - Supports risk assessment model building and data analysis



International Food Safety Trainings

- Good Agricultural Practices (GAPs)
- World Trade Organization Sanitary/Phytosanitary (WTO SPS) Leadership Development
- Good Aquacultural Practices (GAqPs)
- Commercially Sterile Packaged Foods (CSPF)



www.jifsan.umd.edu

www.foodrisk.org